

Dear Parents/Carers

22nd March 2019

Thank you for supporting the Book Fair this year. With your help we have raised £512.45 which we are able to spend on books from Scholastics for the school library and book corners - thank you all! It was good to see the children supporting the Down Syndrome Awareness Day yesterday by wearing their odd socks.

This week in class, we have enjoyed painting fair trade scenes such as banana and cacao plantations looking at proportion, shadow and detail with paints and water colours. We have moved onto looking at diary entries and how they are informal, based on past events and hold many personal thoughts and feelings. In maths, we are beginning to look at statistics - gathering and interpreting data.

Homework

The children have a maths sheet on data to complete in their homework books. They also have their weekly spellings to learn and should refresh their knowledge of timetables ready for the Friday tests.

Final Ilfracombe Chocolate Emporium Visit - Monday, 25th March

The final 2 groups of children from Mrs Johnson's class will be taking part in the wonderful chocolate factory experience on Monday.

School Angel - Fundraising initiative

If you shop with your favourite brands online through Orchard Vale's School angel link the retailers will make a donation to the school. Please see the poster on the attached sheet for details of which retailers take part in this initiative.

Lunch menu for next week is 'Week One'.

Diary Dates (don't forget to check the school website, www.ovschool.co.uk for up to date information)

Fri, 29th Mar - Spaghetti Challenge in class.

Fri, 5th - Last day of school before Easter.

Tue, 2nd April - FoOV Tuck Shop.

Fri, 5th April - FoOV Family Bingo evening.

Mon, 8th to Mon 22nd April - Easter holidays.

Tues, 23rd April - Back to school after Easter.

Have a brilliant weekend.

Miss Gulliford

Mrs Johnson

Mrs Benn

Mr Whapham

PARKING AND SPEED LIMITS AROUND ORCHARD VALE

Like many schools the safety of our pupils and families is paramount to us as is being respectful of the inconvenience caused to our neighbours during morning drop off and afternoon pick up.

Despite your support we have recently received concerns from parents and neighbours about dangerous parking and abusive behaviour. The bus companies and council waste collection trucks have also found they are unable to park due to inconsiderate parking.

Please could parents/carers help us keep our children safe and maintain the good relationship we have with our neighbours by.



- Noting the maximum speed limit, when warning lights are on, approaching Orchard Vale - 20mph. Please do not exceed this.



- Parking in the designated area available either side of the road just past Kingfisher Road. (Parking restrictions are enforced outside school drop off and pick up hours).



- Please do not park in, opposite or obstruct the bus stop on either side of the road.



- If you have to park in the residential roads around the school, please park respectfully and sensibly by not blocking driveways, junctions or mounting pavements.

Thank you for your cooperation.
Fiona Pearce—Head Teacher



Support Your School
schoolangel

If you shop with your favourite brands through Orchard Vale's Angel link the retailers below will make a donation to the school.

Before starting any online shopping:

1. Please go to www.ovschool.co.uk.
2. Click on the School Angel link.
3. Select your required retailer.



Generate a free donation when you take out a free trial

Take out a free Amazon premium trial for 30 days with no obligation to continue and as a thank you Amazon will make a donation ranging from £3 to £5. Click on the logo's to find out more...



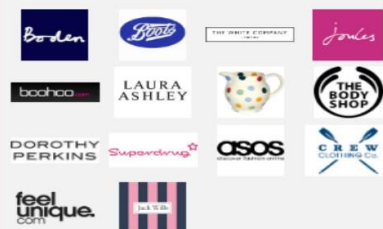
General shopping... ☺



Practical shopping... ☺



Shops for the girls... ♥



Travel, hotels & holidays... ☺

